



West Jordan Office/ Warehouse Units

5320 Wells Park Road (9350 South) - Salt Lake City, Utah

For Lease 

Information:

1. FREE RENT!! FREE RENT!!
6 mos. free with a 3 year lease, o.a.c.
2. 20,077 SF Available For Lease.
3. Available space consists of:

| | |
|----------|----------|
| Unit 3: | 6,000 SF |
| Unit 6: | 3,300 SF |
| Unit 7: | 2,926 SF |
| Unit 11: | 2,617 SF |
| Unit 13: | 2,617 SF |
| Unit 15: | 2,617 SF |
4. Max Contiguous: 7,851 SF
5. 12' Ground Level Doors (1/unit), and 14' Clear Height.
6. Paint Booth, Exhaust Fans, Retail Type Showroom/ Warehouse. Office Spaces, Restrooms, BTS Opportunities!!
7. See back schematic for space details.

!! NOW OFFERING 6 MONTHS FREE RENT !!



2,617 SF FOR \$1,000 MONTH TOTAL!

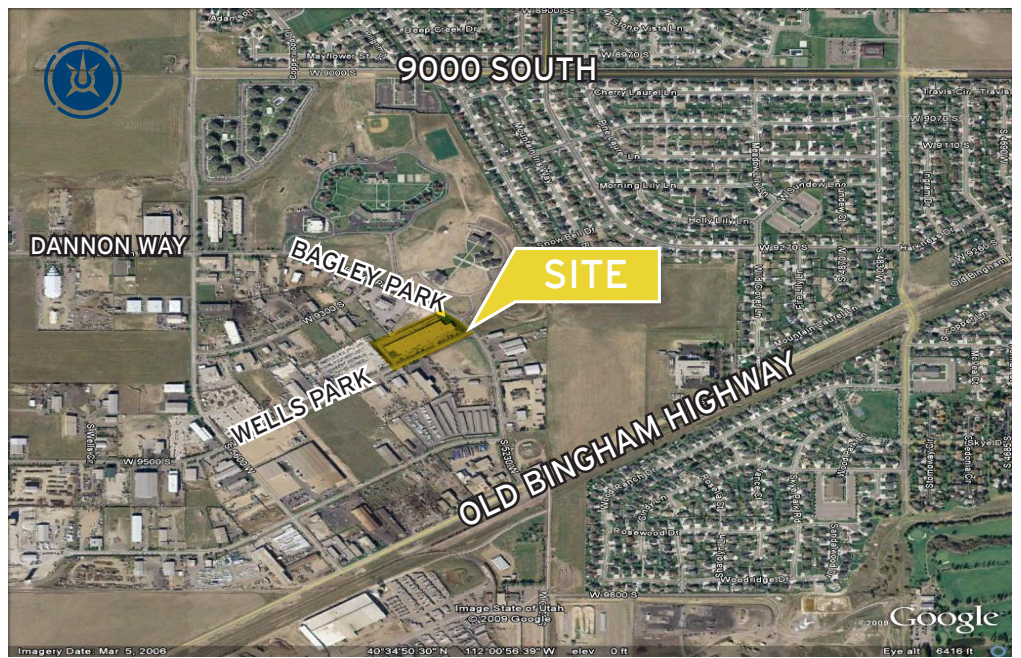
Contact:

West Haradin

801.947.8318 office
west.haradin@coldwellutah.com

Tim Sleeper

801.947.8361 office
tim.sleeper@coldwellutah.com

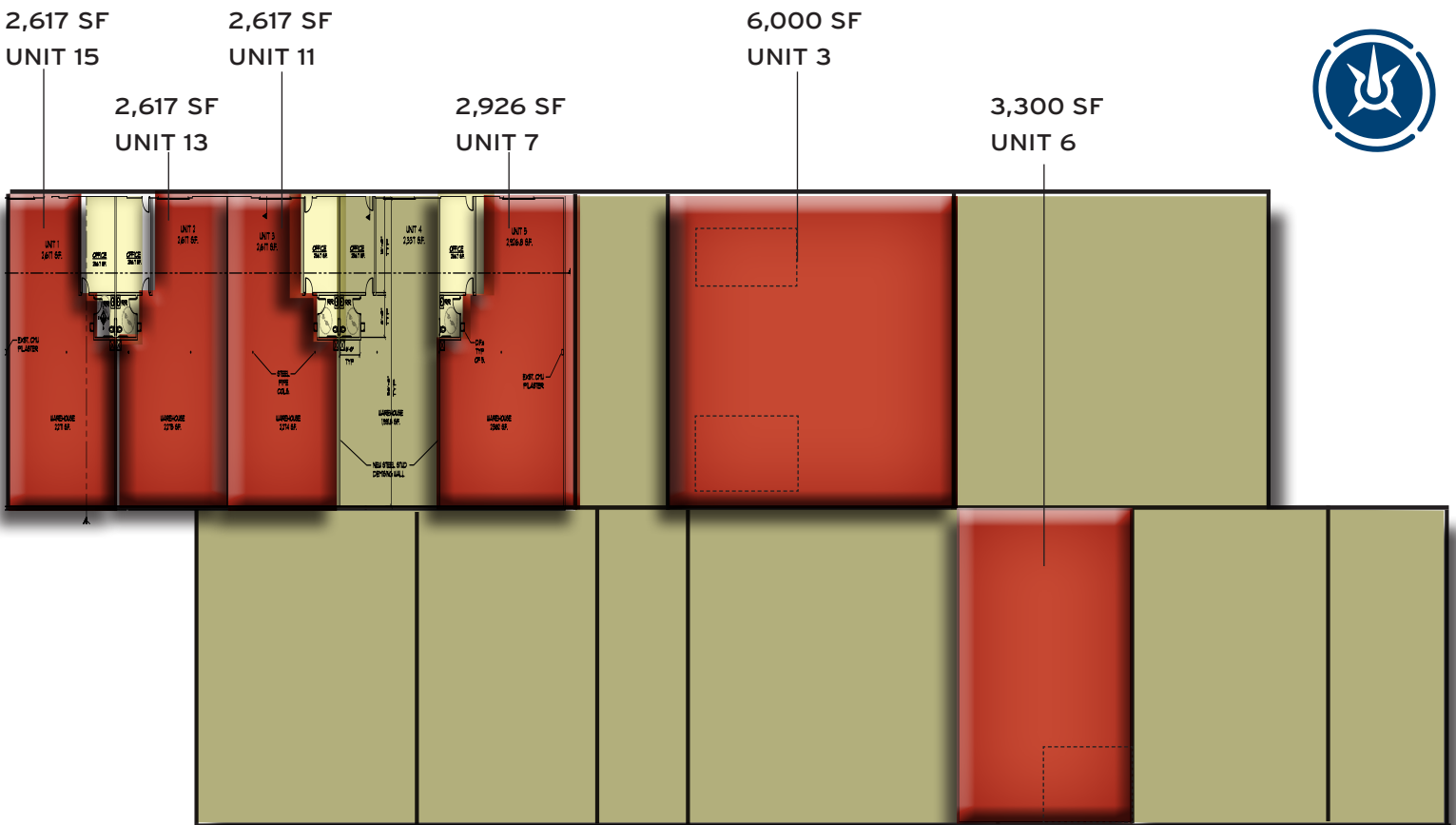


Coldwell Banker Commercial NRT | 6550 South Millrock Drive, Suite 200 | Salt Lake City, Utah 84121
801.947.8300 phone | 801.947.8301 fax | www.coldwellutah.com

UNIT DETAILS:

UNIT 3: Clean & Open Retail Warehouse/ Showroom Space with GLD, Office and Restroom.
UNIT 6: Large Open Warehouse with Paint Booth and Exhaust Fans, Ground Level Door.
UNITS 7-15: Small Affordable Spaces with Office, Restroom and GLD. BTS also available. Can be combined for larger spaces or leased individually. Yard space possible.

6 Months Free Rent with a 3 Year Lease Term!! o.a.c.



West Haradin

801.947.8318 office
west.haradin@coldwellutah.com

Tim Sleeper

801.947.8361 office
tim.sleeper@coldwellutah.com

